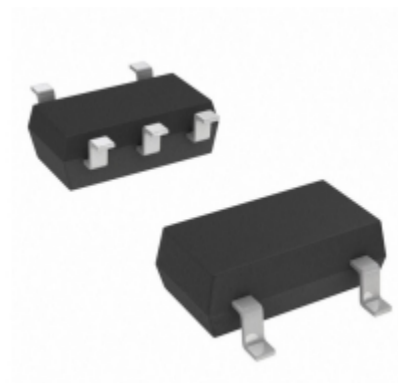


AP7365-30WG-7	
Teilenummer	<a href="#">AP7365-30WG-7</a>
Hersteller	<a href="#">Diodes Incorporated</a>
Beschreibung	IC REG LDO 3V 0.6A SOT-25
Verfügbare Menge	9000 pcs in stock
Datenblätter	<a href="#">AP7365-30WG-7.pdf</a>
AP7365-30WG-7 Price	<a href="#">Preis und Lieferzeit online anfordern</a> or Email us: <a href="mailto:Info@ariat-tech.com">Info@ariat-tech.com</a>


[EIN ANGEBOT BEKOMMEN](#)

Technische Information von AP7365-30WG-7			
Hersteller-Teilenummer	<a href="#">AP7365-30WG-7</a>	Kategorie	<a href="#">Integrierte Schaltungen (ICs)</a>
Hersteller	<a href="#">Diodes Incorporated</a>	Beschreibung	IC REG LDO 3V 0.6A SOT-25
Paket / Fall	Tape & Reel (TR)	Verfügbare Menge	9000
Serie	-	Betriebstemperatur	-40°C ~ 85°C
Befestigungsart	Surface Mount	Spannung - Eingang	Up to 6V
Verpackung / Gehäuse	SC-74A, SOT-753	Supplier Device-Gehäuse	SOT-25
Spannung - Ausgabe	3V	Strom - Ausgabe	600mA
Reglertopologie	Positive Fixed	Spannung - Aussetz (typisch)	0.3V @ 600mA
Anzahl der Regler	1	Strom - Grenze (min)	800mA
Verpackung	Tape & Reel (TR)		

AP7365-30WG-7 9000 pcs Neu und original auf Lager, AP7365-30WG-7-Bestand finden, Datenblatt, PDF, Inventar bei Ariat-Tech.com online, AP7365-30WG-7 Diodes Incorporated mit Garantie und Vertrauen bestellen. Anfrage AP7365-30WG-7: [Info@Ariat-Tech.com](mailto:Info@Ariat-Tech.com)

Zugehörige Teile für AP7365-30WG-7				
Bild	Teilenummer	Beschreibung	Hersteller	Menge
	<a href="#">AP7365-25YRG-13</a>	IC REG LDO 2.5V 0.6A SOT-893L	Diodes Incorporated	2500 pcs
	<a href="#">AP7365-28EG-13</a>	IC REG LDO 2.8V 0.6A SOT-2233L	Diodes Incorporated	5000 pcs
	<a href="#">AP7365-33EG-13</a>	IC REG LDO 3.3V 0.6A SOT-2233L	Diodes Incorporated	10826 pcs
	<a href="#">AP7365-30ERG-13</a>	IC REG LDO 3V 0.6A SOT-2233L	Diodes Incorporated	9000 pcs
	<a href="#">AP7365-33EVG-13</a>	AP7365-33EVG-13 DIODES	Digital View Inc.	5000 pcs
	<a href="#">AP7365-33ERG-13</a>	IC REG LDO 3.3V 0.6A SOT223-3	Diodes Incorporated	9000 pcs
	<a href="#">AP7365-28YRG-13</a>	IC REG LDO 2.8V 0.6A SOT-893L	Diodes Incorporated	2500 pcs
	<a href="#">AP7365-33YG-13</a>	IC REG LDO 3.3V 0.6A SOT-893L	Diodes Incorporated	15055 pcs
	<a href="#">AP7365-30YRG-13</a>	IC REG LDO 3V 0.6A SOT-893L	Diodes Incorporated	15075 pcs
	<a href="#">AP7365-28ERG-13</a>	IC REG LDO 2.8V 0.6A SOT-2233L	Diodes Incorporated	5000 pcs
	<a href="#">AP7365-39EG-13</a>	IC REG LDO 3.9V 0.6A SOT-2233L	Diodes Incorporated	5000 pcs
	<a href="#">AP7365-28YG-13</a>	IC REG LDO 2.8V 0.6A SOT-893L	Diodes Incorporated	13880 pcs
	<a href="#">AP7365-30SNG-7</a>	IC REG LDO 3V 0.6A DFN2020-6	Diodes Incorporated	12000 pcs
	<a href="#">AP7365-30EG-13</a>	IC REG LDO 3V 0.6A SOT-2233L	Diodes Incorporated	2500 pcs
	<a href="#">AP7365-33SNG-7</a>	IC REG LDO 3.3V 0.6A DFN2020-6	Diodes Incorporated	40 pcs
	<a href="#">AP7365-33WG-7</a>	IC REG LDO 3.3V 0.6A SOT-25	Diodes Incorporated	122000 pcs
	<a href="#">AP7365-28WG-7</a>	IC REG LDO 2.8V 0.6A SOT-25	Diodes Incorporated	15085 pcs
	<a href="#">AP7365-33YRG-13</a>	IC REG LDO 3.3V 0.6A SOT-893L	Diodes Incorporated	33000 pcs
	<a href="#">AP7365-30YG-13</a>	IC REG LDO 3V 0.6A SOT-893L	Diodes Incorporated	5000 pcs
	<a href="#">AP7365-28SNG-7</a>	IC REG LDO 2.8V 0.6A DFN2020-6	Diodes Incorporated	2532 pcs

**IC Chips & IGBT Modul - Hot Stock Teilenummer**

<a href="#">AP7365-12YG-13</a>	<a href="#">AP7365-12YRG-13</a>	<a href="#">AP7365-15EG-13</a>	<a href="#">AP7365-15ERG-13</a>	<a href="#">AP7365-15SNG-7</a>
<a href="#">AP7365-15WG-7</a>	<a href="#">AP7365-15YG-13</a>	<a href="#">AP7365-15YRG-13</a>	<a href="#">AP7365-18EG-13</a>	<a href="#">AP7365-18SNG-7</a>
<a href="#">AP7365-18WG-7</a>	<a href="#">AP7365-18YG-13</a>	<a href="#">AP7365-18YRG-13</a>	<a href="#">AP7365-20EG-13</a>	<a href="#">AP7365-20ERG-13</a>
<a href="#">AP7365-20SNG-7</a>	<a href="#">AP7365-20WG-7</a>	<a href="#">AP7365-20YG-13</a>	<a href="#">AP7365-20YRG-13</a>	<a href="#">AP7365-25WG-7</a>
<a href="#">AP7365-25YRG-13</a>	<a href="#">AP7365-28EG-13</a>	<a href="#">AP7365-28ERG-13</a>	<a href="#">AP7365-28WG-7</a>	<a href="#">AP7365-28YRG-13</a>
<a href="#">AP7365-30EG-13</a>	<a href="#">AP7365-30ERG-13</a>	<a href="#">AP7365-30SNG-7</a>	<a href="#">AP7365-30YG-13</a>	<a href="#">AP7365-30YRG-13</a>
<a href="#">AP7365-33ERG-13</a>	<a href="#">AP7365-33EVG-13</a>	<a href="#">AP7365-33WG-7</a>	<a href="#">AP7365-33YG-13</a>	<a href="#">AP7365-33YRG-13</a>
<a href="#">AP7365-39EG-13</a>	<a href="#">AP7365-39WG-7</a>	<a href="#">AP7365-39YG-13</a>	<a href="#">AP7365-39YRG-13</a>	<a href="#">AP7365-ADJWG-7</a>
<a href="#">AP7365-WG-7</a>	<a href="#">AP78L05SG-13</a>	<a href="#">AP78L05VL-A</a>	<a href="#">AP78L05YG-13</a>	<a href="#">AP78L08SG-13</a>
<a href="#">AP78L08VL-A</a>	<a href="#">AP78L08YG-13</a>	<a href="#">AP78L12SG-13</a>	<a href="#">AP78L12VL-A</a>	<a href="#">AP78L12YG-13</a>

Händler für Elektronikkomponenten - IC-Chips & IGBT-Modullieferant.

Angebotsanfrage E-Mail: [Info@ariat-tech.com](mailto:Info@ariat-tech.com) Webseite: <https://www.ariat-tech.com>

Urheberrechtsvermerk © 1996-2019 ARIAT TECHNOLOGY LIMITED. Alle Rechte vorbehalten.