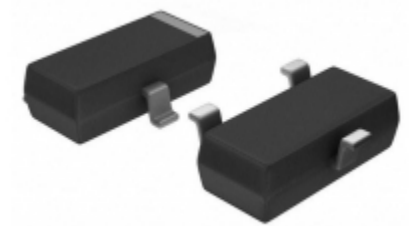


| ADM1815-20ART-RL7       |                                                                                                                                    |
|-------------------------|------------------------------------------------------------------------------------------------------------------------------------|
| Teilenummer             | <a href="#">ADM1815-20ART-RL7</a>                                                                                                  |
| Hersteller              | ADI (Analog Devices, Inc.)                                                                                                         |
| Beschreibung            | IC MONITOR RESET 2.55V SOT23                                                                                                       |
| Verfügbare Menge        | 1600 pcs in stock                                                                                                                  |
| Datenblätter            | <a href="#">ADM1815-20ART-RL7.pdf</a>                                                                                              |
| ADM1815-20ART-RL7 Price | <a href="#">Preis und Lieferzeit online anfordern</a><br>or Email us: <a href="mailto:Info@ariat-tech.com">Info@ariat-tech.com</a> |


[EIN ANGEBOT BEKOMMEN](#)

| Technische Information von ADM1815-20ART-RL7 |                                    |                                           |                                                     |
|----------------------------------------------|------------------------------------|-------------------------------------------|-----------------------------------------------------|
| Hersteller-Teilenummer                       | <a href="#">ADM1815-20ART-RL7</a>  | Kategorie                                 | <a href="#">Integrierte Schaltungen (ICs)</a>       |
| Hersteller                                   | ADI (Analog Devices, Inc.)         | Beschreibung                              | IC MONITOR RESET 2.55V SOT23                        |
| Paket / Fall                                 | Digi-Reel®                         | Verfügbare Menge                          | 1600                                                |
| Spannung - Schwellen                         | 2.55V                              | Art                                       | Simple Reset/Power-On Reset                         |
| Supplier Device-Gehäuse                      | SOT-23-3                           | Serie                                     | -                                                   |
| Zurücksetzen Timeout                         | 100 ms Minimum                     | zurückstellen                             | Active Low                                          |
| Verpackung                                   | Original-Reel®                     | Verpackung / Gehäuse                      | TO-236-3, SC-59, SOT-23-3                           |
| Ausgabe                                      | Push-Pull, Totem Pole              | Andere Namen                              | ADM1815-20ART-RL7DKR                                |
| Betriebstemperatur                           | -40°C ~ 105°C (TA)                 | Anzahl der überwachten Spannungen         | 1                                                   |
| Befestigungsart                              | Surface Mount                      | Feuchtigkeitsempfindlichkeitsniveau (MSL) | 1 (Unlimited)                                       |
| Bleifreier Status / RoHS-Status              | Contains lead / RoHS non-compliant | detaillierte Beschreibung                 | Supervisor Push-Pull, Totem Pole 1 Channel SOT-23-3 |
| Basisteilenummer                             | ADM1815                            |                                           |                                                     |

ADM1815-20ART-RL7 1600 pcs Neu und original auf Lager, ADM1815-20ART-RL7-Bestand finden, Datenblatt, PDF, Inventar bei Ariat-Tech.com online, ADM1815-20ART-RL7 mit Garantie und Vertrauen bestellen. Anfrage ADM1815-20ART-RL7: [Info@Ariat-Tech.com](mailto:Info@Ariat-Tech.com)

| Zugehörige Teile für ADM1815-20ART-RL7 |                                      |                                 |                            |          |
|----------------------------------------|--------------------------------------|---------------------------------|----------------------------|----------|
| Bild                                   | Teilenummer                          | Beschreibung                    | Hersteller                 | Menge    |
|                                        | <a href="#">ADM1815-5ARTZ</a>        | ADM1815-5ARTZ AD                | AD                         | 270 pcs  |
|                                        | <a href="#">ADM1815-5AKSZ-REEL</a>   | IC MONITOR RESET 3.06V SC-70-3  | ADI (Analog Devices, Inc.) | 500 pcs  |
|                                        | <a href="#">ADM1815-10ARTZ-RL</a>    | IC MONITOR RESET 2.88V SOT23    | ADI (Analog Devices, Inc.) | 500 pcs  |
|                                        | <a href="#">ADM1815-5AKS-REEL</a>    | IC MONITOR RESET 3.06V SC-70-3  | ADI (Analog Devices, Inc.) | 500 pcs  |
|                                        | <a href="#">ADM1815-20ARTZ-REEL7</a> | ADM1815-20ARTZ-REEL7 AD         | AD                         | 69 pcs   |
|                                        | <a href="#">ADM1815-10ARTZ</a>       | ADM1815-10ARTZ AD               | AD                         | 3070 pcs |
|                                        | <a href="#">ADM1815-20ARTZ-RL7</a>   | IC MONITOR RESET 2.55V SOT23    | ADI (Analog Devices, Inc.) | 5100 pcs |
|                                        | <a href="#">ADM1815-20AKSZ-RL</a>    | IC MONITOR RESET 2.55V SC-70-3  | ADI (Analog Devices, Inc.) | 500 pcs  |
|                                        | <a href="#">ADM1815-20AKSZ-RL7</a>   | IC MONITOR RESET 2.55V SC-70-3  | ADI (Analog Devices, Inc.) | 500 pcs  |
|                                        | <a href="#">ADM1815-20AKS-REEL</a>   | IC MONITOR RESET 2.55V SC-70-3  | ADI (Analog Devices, Inc.) | 500 pcs  |
|                                        | <a href="#">ADM1815-5ART-REEL7</a>   | IC MONITOR RESET 3.06V SOT23    | ADI (Analog Devices, Inc.) | 500 pcs  |
|                                        | <a href="#">ADM1815-5AKS-RL7</a>     | IC MONITOR RESET 3.06V SC-70-3  | ADI (Analog Devices, Inc.) | 500 pcs  |
|                                        | <a href="#">ADM1815-10ARTZ-REEL7</a> | ADM1815-10ARTZ-REEL7 AD/AD      | AD/AD                      | 3688 pcs |
|                                        | <a href="#">ADM1815-20AKS-RL7</a>    | IC MONITOR RESET 2.55V SC-70-3  | ADI (Analog Devices, Inc.) | 500 pcs  |
|                                        | <a href="#">ADM1815-20ARTZ</a>       | ADM1815-20ARTZ AD               | AD                         | 2238 pcs |
|                                        | <a href="#">ADM1815-5ART-REEL</a>    | IC MONITOR RESET 3.06V SOT23 TR | ADI (Analog Devices, Inc.) | 500 pcs  |
|                                        | <a href="#">ADM1815-10ARTZ-RL7</a>   | IC MONITOR RESET 2.88V SOT23    | ADI (Analog Devices, Inc.) | 619 pcs  |
|                                        | <a href="#">ADM1815-20ART-REEL</a>   | ADM1815-20ART-REEL AD           | AD                         | 656 pcs  |
|                                        | <a href="#">ADM1815-5AKSZ-RL7</a>    | IC MONITOR RESET 3.06V SC-70-3  | ADI (Analog Devices, Inc.) | 500 pcs  |
|                                        | <a href="#">ADM1815-10ART-RL7</a>    | IC MONITOR RESET 2.88V SOT23 TR | ADI (Analog Devices, Inc.) | 6418 pcs |

|                              |                                            |                              |                                    |
|------------------------------|--------------------------------------------|------------------------------|------------------------------------|
| ADM1815-20ART-RL7-Lager      | ADM1815-20ART-RL7 Preis                    | ADM1815-20ART-RL7-Elektronik | ADM1815-20ART-RL7-Komponenten      |
| ADM1815-20ART-RL7 Inventar   | ADM1815-20ART-RL7 Digikey                  | Lieferant ADM1815-20ART-RL7  | ADM1815-20ART-RL7 online bestellen |
| Anfrage ADM1815-20ART-RL7    | ADM1815-20ART-RL7-Bild                     | ADM1815-20ART-RL7 Bild       | ADM1815-20ART-RL7 PDF              |
| ADM1815-20ART-RL7 Datenblatt | ADM1815-20ART-RL7 Datenblatt herunterladen | Hersteller                   |                                    |