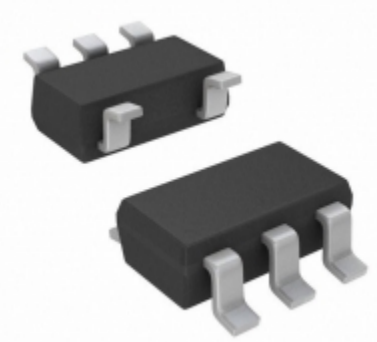


| MCP1824T-ADJE/OT       |  |
|------------------------|--|
| Teilenummer            | MCP1824T-ADJE/OT   |
| Hersteller             | Micrel / Microchip Technology  |
| Beschreibung           | IC REG LDO ADJ 0.3A SOT23-5  |
| Verfügbare Menge       | 3225 pcs in stock  |
| Datenblätter           | <a href="#">MCP1824T-ADJE/OT.pdf</a>   |
| MCP1824T-ADJE/OT Price | <a href="#">Preis und Lieferzeit online anfordern</a><br>or Email us: <a href="mailto:Info@ariat-tech.com">Info@ariat-tech.com</a> |


[EIN ANGEBOT BEKOMMEN](#)

| Technische Information von MCP1824T-ADJE/OT |                               |                              |                               |
|---|-------------------------------|------------------------------|-------------------------------|
| Hersteller-Teilenummer                      | MCP1824T-ADJE/OT              | Kategorie                    | Integrierte Schaltungen (ICs) |
| Hersteller                                  | Micrel / Microchip Technology | Beschreibung                 | IC REG LDO ADJ 0.3A SOT23-5   |
| Paket / Fall                                | Tape & Reel (TR)              | Verfügbare Menge             | 3225                          |
| Serie                                       | -                             | Betriebstemperatur           | -40°C ~ 125°C                 |
| Befestigungsart                             | Surface Mount                 | Spannung - Eingang           | 2.1 V ~ 6 V                   |
| Verpackung / Gehäuse                        | SC-74A, SOT-753               | Supplier Device-Gehäuse      | SOT-23-5                      |
| Spannung - Ausgabe                          | 0.8 V ~ 5 V                   | Strom - Ausgabe              | 300mA                         |
| Reglertopologie                             | Positive Adjustable           | Spannung - Aussetz (typisch) | 0.2V @ 300mA                  |
| Anzahl der Regler                           | 1                             | Strom - Grenze (min)         | -                             |
| Verpackung                                  | Tape & Reel (TR)              |                              |                               |

MCP1824T-ADJE/OT 3225 pcs Neu und original auf Lager, MCP1824T-ADJE/OT-Bestand finden, Datenblatt, PDF, Inventar bei Ariat-Tech.com online, MCP1824T-ADJE/OT Micrel / Microchip Technology mit Garantie und Vertrauen bestellen. Anfrage MCP1824T-ADJE/OT: [Info@Ariat-Tech.com](mailto:Info@Ariat-Tech.com)

| Zugehörige Teile für MCP1824T-ADJE/OT |                                     |                                  |                               |           |
|---------------------------------------|-------------------------------------|----------------------------------|-------------------------------|-----------|
| Bild                                  | Teilenummer                         | Beschreibung                     | Hersteller                    | Menge     |
|                                       | <a href="#">MCP1824T-3302E/OT</a>   | IC REG LDO 3.3V 0.3A SOT23-5     | Micrel / Microchip Technology | 9100 pcs  |
|                                       | <a href="#">MCP1824T-5002E/OT</a>   | IC REG LDO 5V 0.3A SOT23-5       | Micrel / Microchip Technology | 2392 pcs  |
|                                       | <a href="#">MCP1825-0802E/AT</a>    | IC REG LDO 0.8V 0.5A TO220-5     | Micrel / Microchip Technology | 500 pcs   |
|                                       | <a href="#">MCP1825-1802E/ET</a>    | IC REG LDO 1.8V 0.5A DDPACK      | Micrel / Microchip Technology | 1500 pcs  |
|                                       | <a href="#">MCP1824T-5002E/DC</a>   | IC REG LDO 5V 0.3A SOT223-5      | Micrel / Microchip Technology | 500 pcs   |
|                                       | <a href="#">MCP1825-3002E/AT</a>    | IC REG LDO 3V 0.5A TO220-5       | Micrel / Microchip Technology | 500 pcs   |
|                                       | <a href="#">MCP1824T-2502E/OT</a>   | IC REG LDO 2.5V 0.3A SOT23-5     | Micrel / Microchip Technology | 15055 pcs |
|                                       | <a href="#">MCP1824T-1802E/OT</a>   | IC REG LDO 1.8V 0.3A SOT23-5     | Micrel / Microchip Technology | 2500 pcs  |
|                                       | <a href="#">MCP1824T-ADJE/OTVAO</a> | IC REG LIN POS ADJ 300MA SOT23-5 | Micrel / Microchip Technology | 500 pcs   |
|                                       | <a href="#">MCP1824T-2502E/DC</a>   | IC REG LDO 2.5V 0.3A SOT223-5    | Micrel / Microchip Technology | 500 pcs   |
|                                       | <a href="#">MCP1824T-3002E/DC</a>   | IC REG LDO 3V 0.3A SOT223-5      | Micrel / Microchip Technology | 4000 pcs  |
|                                       | <a href="#">MCP1824T-3002E/OT</a>   | IC REG LDO 3V 0.3A SOT23-5       | Micrel / Microchip Technology | 260 pcs   |
|                                       | <a href="#">MCP1824T-ADJE/DC</a>    | IC REG LDO ADJ 0.3A SOT223-5     | Micrel / Microchip Technology | 500 pcs   |
|                                       | <a href="#">MCP1825-0802E/ET</a>    | IC REG LDO 0.8V 0.5A DDPACK      | Micrel / Microchip Technology | 500 pcs   |
|                                       | <a href="#">MCP1825-1202E/AT</a>    | IC REG LDO 1.2V 0.5A TO220-5     | Micrel / Microchip Technology | 500 pcs   |
|                                       | <a href="#">MCP1824T-3302E/DC</a>   | IC REG LDO 3.3V 0.3A SOT223-5    | Micrel / Microchip Technology | 7974 pcs  |
|                                       | <a href="#">MCP1825-1202E/ET</a>    | IC REG LDO 1.2V 0.5A DDPACK      | Micrel / Microchip Technology | 500 pcs   |
|                                       | <a href="#">MCP1825-2502E/ET</a>    | IC REG LDO 2.5V 0.5A DDPACK      | Micrel / Microchip Technology | 2800 pcs  |
|                                       | <a href="#">MCP1825-1802E/AT</a>    | IC REG LDO 1.8V 0.5A TO220-5     | Micrel / Microchip Technology | 500 pcs   |
|                                       | <a href="#">MCP1825-2502E/AT</a>    | IC REG LDO 2.5V 0.5A TO220-5     | Micrel / Microchip Technology | 500 pcs   |

#### IC Chips & IGBT Modul - Hot Stock Teilenummer

|                                     |                                    |                                    |                                    |                                     |
|-------------------------------------|------------------------------------|------------------------------------|------------------------------------|-------------------------------------|
| <a href="#">MCP1804T-5002/MB</a>    | <a href="#">MCP1804T-5002/MBTR</a> | <a href="#">MCP1804T-5002/OT</a>   | <a href="#">MCP1804T-A002/MB</a>   | <a href="#">MCP1804T-C002/MB</a>    |
| <a href="#">MCP1824-1802E/OT</a>    | <a href="#">MCP1824-2502E/OT</a>   | <a href="#">MCP1824-3002E/OT</a>   | <a href="#">MCP1824-3302E/DB</a>   | <a href="#">MCP1824-3302E/OT</a>    |
| <a href="#">MCP1824S-2502E/DB</a>   | <a href="#">MCP1824S-3302E/DB</a>  | <a href="#">MCP1824S-5002E/DB</a>  | <a href="#">MCP1824ST-1802E/DB</a> | <a href="#">MCP1824ST-3302E/DB</a>  |
| <a href="#">MCP1824ST-5002E/DB</a>  | <a href="#">MCP1824T-0802E/DC</a>  | <a href="#">MCP1824T-0802E/OT</a>  | <a href="#">MCP1824T-1002E/OT</a>  | <a href="#">MCP1824T-1202E/OT</a>   |
| <a href="#">MCP1824T-1802E/OT</a>   | <a href="#">MCP1824T-2502E/OT</a>  | <a href="#">MCP1824T-3302E/DC</a>  | <a href="#">MCP1824T-3302E/OT</a>  | <a href="#">MCP1824T-5002E/OT</a>   |
| <a href="#">MCP1825S-1802E/AB</a>   | <a href="#">MCP1825S-1802E/DB</a>  | <a href="#">MCP1825S-2502E/AB</a>  | <a href="#">MCP1825S-3302E</a>     | <a href="#">MCP1825S-3302E/DB</a>   |
| <a href="#">MCP1825S-3302E/DBTR</a> | <a href="#">MCP1825S-3302E/EB</a>  | <a href="#">MCP1825S-5002E/AB</a>  | <a href="#">MCP1825S-5002E/DB</a>  | <a href="#">MCP1825S-5002E/DBTR</a> |
| <a href="#">MCP1825S-5002E/EB</a>   | <a href="#">MCP1825ST-1202E/DB</a> | <a href="#">MCP1825ST-1802E/DB</a> | <a href="#">MCP1825ST-3302E/DB</a> | <a href="#">MCP1825ST-5002E/DB</a>  |
| <a href="#">MCP1825T-5002E/DC</a>   | <a href="#">MCP1825T-ADJE/DC</a>   | <a href="#">MCP1826-3302E/DB</a>   | <a href="#">MCP1826-3302E/ET</a>   | <a href="#">MCP1826-ADJE/DC</a>     |
| <a href="#">MCP1826-ADJE/ET</a>     | <a href="#">MCP1826S-1802E/AB</a>  | <a href="#">MCP1826S-1802E/EB</a>  | <a href="#">MCP1826S-3302E/DB</a>  | <a href="#">MCP1826S-3302E/EB</a>   |

Händler für Elektronikkomponenten - IC-Chips & IGBT-Modullieferant.

Angebotsanfrage E-Mail: [Info@ariat-tech.com](mailto:Info@ariat-tech.com) Webseite: <https://www.ariat-tech.com>

Urheberrechtsvermerk © 1996-2019 ARIAT TECHNOLOGY LIMITED. Alle Rechte vorbehalten.