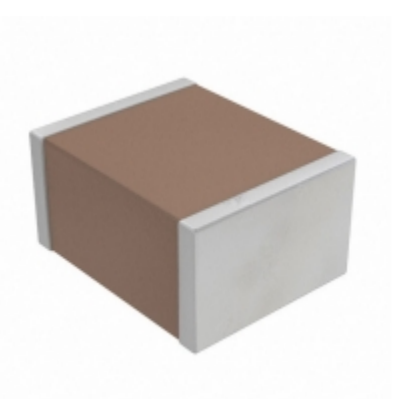


<b>CGA6L2NP01H333J160AA</b>	
Teilenummer	<a href="#">CGA6L2NP01H333J160AA</a>
Hersteller	<a href="#">TDK Corporation</a>
Beschreibung	CAP CER 0.033UF 50V NP0 1210
Verfügbare Menge	500 pcs in stock
Datenblätter	
CGA6L2NP01H333J160AA Price	<a href="#">Preis und Lieferzeit online anfordern</a> or Email us: <a href="mailto:Info@ariat-tech.com">Info@ariat-tech.com</a>


[EIN ANGEBOT BEKOMMEN](#)

Technische Information von CGA6L2NP01H333J160AA			
Hersteller-Teilenummer	<a href="#">CGA6L2NP01H333J160AA</a>	Kategorie	<a href="#">Kondensatoren</a>
Hersteller	<a href="#">TDK Corporation</a>	Beschreibung	CAP CER 0.033UF 50V NP0 1210
Paket / Fall	Tape & Reel (TR)	Verfügbare Menge	500
Serie	CGA	Spannung - Nennwert	50V
Betriebstemperatur	-55°C ~ 150°C	Bewertungen	AEC-Q200
Befestigungsart	Surface Mount, MLCC	Größe / Dimension	0.126" L x 0.098" W (3.20mm x 2.50mm)
Höhe - eingesteckt (max)	-	Eigenschaften	High Temperature
Kapazität	0.033µF	Toleranz	±5%
Anwendungen	Automotive	Leiter-Abstand	-
Verpackung / Gehäuse	1210 (3225 Metric)	Temperaturkoeffizient	C0G, NP0
Dicke (max)	0.071" (1.80mm)	Leitungsstil	-
Fehlerrate	-	Verpackung	Tape & Reel (TR)

CGA6L2NP01H333J160AA 500 pcs Neu und original auf Lager, CGA6L2NP01H333J160AA-Bestand finden, Datenblatt, PDF, Inventar bei Ariat-Tech.com online, CGA6L2NP01H333J160AA TDK Corporation mit Garantie und Vertrauen bestellen. Anfrage CGA6L2NP01H333J160AA: [Info@Ariat-Tech.com](mailto:Info@Ariat-Tech.com)

Zugehörige Teile für CGA6L2NP01H333J160AA				
Bild	Teilenummer	Beschreibung	Hersteller	Menge
	<a href="#">CGA6L2X7R1H105M160AD</a>	CAP CER 1UF 50V X7R 1210	TDK-Lambda Americas, Inc.	500 pcs
	<a href="#">CGA6L2X7R1H105K160AD</a>	CAP CER 1UF 50V X7R 1210	TDK Corporation	500 pcs
	<a href="#">CGA6L2X7R1H105M160AA</a>	CAP CER 1UF 50V X7R 1210	TDK Corporation	500 pcs
	<a href="#">CGA6L1X7T2J104M160AC</a>	CAP CER 0.1UF 630V X7T 1210	TDK Corporation	500 pcs
	<a href="#">CGA6L1X7T2J104M160AE</a>	CAP CER 0.1UF 630V X7T 1210	TDK Corporation	500 pcs
	<a href="#">CGA6L2X7R1H105K160AE</a>	CAP CER 1UF 50V X7R 1210	TDK Corporation	500 pcs
	<a href="#">CGA6L1X7S3A472K160AA</a>	CAP CER 4700PF 1KV X7S 1210	TDK Corporation	500 pcs
	<a href="#">CGA6L2X7R1H105M160AE</a>	CAP CER 1UF 50V X7R 1210	TDK Corporation	500 pcs
	<a href="#">CGA6L1X7S3A472M160AA</a>	CAP CER 4700PF 1KV X7S 1210	TDK Corporation	500 pcs
	<a href="#">CGA6J4NP02J103J125AA</a>	CAP CER 10000PF 630V NP0 1210	TDK Corporation	500 pcs
	<a href="#">CGA6L2NP02A223J160AA</a>	CAP CER 0.022UF 100V NP0 1210	TDK Corporation	500 pcs
	<a href="#">CGA6J4NP02J822J125AA</a>	CAP CER 8200PF 630V NP0 1210	TDK Corporation	500 pcs
	<a href="#">CGA6L1X7T2J104K160AC</a>	CAP CER 0.1UF 630V X7T 1210	TDK Corporation	500 pcs
	<a href="#">CGA6L2C0G1H333J160AA</a>	CAP CER 0.033UF 50V C0G 1210	TDK Corporation	500 pcs
	<a href="#">CGA6L2C0G2A223J160AA</a>	CAP CER 0.022UF 100V C0G 1210	TDK Corporation	500 pcs
	<a href="#">CGA6L2X7R1E335K</a>	CAP CER 3.3UF 25V X7R 1210	TDK Corporation	500 pcs
	<a href="#">CGA6L2X7R1H105M160AD</a>	CAP CER 1UF 50V X7R 1210	TDK Corporation	500 pcs
	<a href="#">CGA6L1X7T2J104K160AE</a>	CAP CER 0.1UF 630V X7T 1210	TDK Corporation	500 pcs
	<a href="#">CGA6L2X7R1H105K160AA</a>	CAP CER 1UF 50V X7R 1210	TDK Corporation	18000 pcs
	<a href="#">CGA6L2X7R2A684K160AA</a>	CAP CER 0.68UF 100V X7R 1210	TDK Corporation	500 pcs

**IC Chips & IGBT Modul - Hot Stock Teilenummer**

<a href="#">CGA5L4X7R2J333M160AE</a>	<a href="#">CGA5L4X7R2J333M160AE</a>	<a href="#">CGA5L4X7T2W104K160AA</a>	<a href="#">CGA5L4X7T2W104K160AE</a>	<a href="#">CGA5L4X7T2W104M160AA</a>
<a href="#">CGA5L4X7T2W104M160AE</a>	<a href="#">CGA6618-1</a>	<a href="#">CGA6618Z</a>	<a href="#">CGA6J2C0G1H223J125AA</a>	<a href="#">CGA6J2C0G2A153J125AA</a>
<a href="#">CGA6J2NP01H223J125AA</a>	<a href="#">CGA6J2NP02A153J125AA</a>	<a href="#">CGA6J4C0G2J103J125AA</a>	<a href="#">CGA6J4C0G2J392J125AA</a>	<a href="#">CGA6J4C0G2J822J125AA</a>
<a href="#">CGA6J4NP02J103J125AA</a>	<a href="#">CGA6J4NP02J822J125AA</a>	<a href="#">CGA6L1X7S3A472K160AA</a>	<a href="#">CGA6L1X7S3A472M160AA</a>	<a href="#">CGA6L1X7T2J104K160AC</a>
<a href="#">CGA6L1X7T2J104K160AE</a>	<a href="#">CGA6L1X7T2J104M160AC</a>	<a href="#">CGA6L1X7T2J104M160AE</a>	<a href="#">CGA6L2C0G1H333J160AA</a>	<a href="#">CGA6L2C0G2A223J160AA</a>
<a href="#">CGA6L2NP02A223J160AA</a>	<a href="#">CGA6L2X7R1E335K</a>	<a href="#">CGA6L2X7R1H105K160AA</a>	<a href="#">CGA6L2X7R1H105K160AD</a>	<a href="#">CGA6L2X7R1H105K160AE</a>
<a href="#">CGA6L2X7R1H105M160AA</a>	<a href="#">CGA6L2X7R1H105M160AD</a>	<a href="#">CGA6L2X7R1H105M160AD</a>	<a href="#">CGA6L2X7R1H105M160AE</a>	<a href="#">CGA6L2X7R2A684K160AA</a>
<a href="#">CGA6L2X7R2A684M160AA</a>	<a href="#">CGA6L2X8R1E155K160AA</a>	<a href="#">CGA6L2X8R1E155K160AD</a>	<a href="#">CGA6L2X8R1E155M160AA</a>	<a href="#">CGA6L2X8R1E155M160AD</a>
<a href="#">CGA6L3C0G2E103J160AA</a>	<a href="#">CGA6L3C0G2E223J160AA</a>	<a href="#">CGA6L3NP02E223J160AA</a>	<a href="#">CGA6L4C0G2J153J160AA</a>	<a href="#">CGA6L4C0G2J472J160AA</a>
<a href="#">CGA6L4C0G2J562J160AA</a>	<a href="#">CGA6L4NP02J153J160AA</a>	<a href="#">CGA6M1C0G3A102J200AC</a>	<a href="#">CGA6M1C0G3A152J200AC</a>	<a href="#">CGA6M1C0G3A222J200AC</a>

Händler für Elektronikkomponenten - IC-Chips & IGBT-Modullieferant.

Angebotsanfrage E-Mail: [Info@ariat-tech.com](mailto:Info@ariat-tech.com) Webseite: <https://www.ariat-tech.com>

Urheberrechtsvermerk © 1996-2019 ARIAT TECHNOLOGY LIMITED. Alle Rechte vorbehalten.