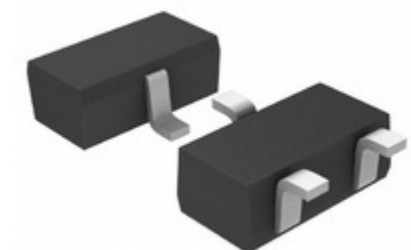


| BU45L332G-TL       |  |
|--------------------|--|
| Teilenummer        | <a href="#">BU45L332G-TL</a>   |
| Hersteller         | <a href="#">LAPIS Semiconductor</a>  |
| Beschreibung       | VOLTAGE DETECTOR WITH FIXED DELA   |
| Verfügbare Menge   | 500 pcs in stock   |
| Datenblätter       | <a href="#">1.BU45L332G-TL.pdf</a><br><a href="#">2.BU45L332G-TL.pdf</a>   |
| BU45L332G-TL Price | <a href="#">Preis und Lieferzeit online anfordern</a><br>or Email us: <a href="mailto:Info@ariat-tech.com">Info@ariat-tech.com</a> |


[EIN ANGEBOT BEKOMMEN](#)

| Technische Information von BU45L332G-TL |  |   |   |
|---|--|---|---|
| Hersteller-Teilenummer                  | <a href="#">BU45L332G-TL</a>                             | Kategorie                                 | <a href="#">Integrierte Schaltungen (ICs)</a> |
| Hersteller                              | <a href="#">LAPIS Semiconductor</a>                      | Beschreibung                              | VOLTAGE DETECTOR WITH FIXED DELA              |
| Paket / Fall                            | Cut Tape (CT)  | Verfügbare Menge                          | 500   |
| Spannung - Schwellen                    | 3.3V   | Art                                       | Voltage Detector                              |
| Supplier Device-Gehäuse                 | 3-SSOP   | Serie                                     | -   |
| Zurücksetzen Timeout                    | 120 ms Minimum   | zurückstellen                             | Active Low                                    |
| Verpackung                              | Cut Tape (CT)  | Verpackung / Gehäuse                      | TO-236-3, SC-59, SOT-23-3                     |
| Ausgabe                                 | Open Drain or Open Collector                             | Andere Namen                              | BU45L332G-TLCT                                |
| Betriebstemperatur                      | -40°C ~ 105°C (TA)                                       | Anzahl der überwachten Spannungen         | 1   |
| Befestigungsart                         | Surface Mount  | Feuchtigkeitsempfindlichkeitsniveau (MSL) | 3 (168 Hours)                                 |
| Hersteller Standard Vorlaufzeit         | 8 Weeks  | Bleifreier Status / RoHS-Status           | Lead free / RoHS Compliant                    |
| detaillierte Beschreibung               | Supervisor Open Drain or Open Collector 1 Channel 3-SSOP |   |   |

BU45L332G-TL 500 pcs Neu und original auf Lager, BU45L332G-TL-Bestand finden, Datenblatt, PDF, Inventar bei Ariat-Tech.com online, BU45L332G-TL LAPIS Semiconductor mit Garantie und Vertrauen bestellen. Anfrage BU45L332G-TL: [Info@Ariat-Tech.com](mailto:Info@Ariat-Tech.com)

| Zugehörige Teile für BU45L332G-TL |                              |                                  |                     |         |
|-----------------------------------|------------------------------|----------------------------------|---------------------|---------|
| Bild                              | Teilenummer                  | Beschreibung                     | Hersteller          | Menge   |
|                                   | <a href="#">BU45K442G-TL</a> | VOLTAGE DETECTOR WITH FIXED DELA | LAPIS Semiconductor | 500 pcs |
|                                   | <a href="#">BU46K244G-TL</a> | VOLTAGE DETECTOR WITH FIXED DELA | LAPIS Semiconductor | 500 pcs |
|                                   | <a href="#">BU46K272G-TL</a> | VOLTAGE DETECTOR WITH FIXED DELA | LAPIS Semiconductor | 500 pcs |
|                                   | <a href="#">BU45L232G-TL</a> | VOLTAGE DETECTOR WITH FIXED DELA | LAPIS Semiconductor | 500 pcs |
|                                   | <a href="#">BU45K452G-TL</a> | VOLTAGE DETECTOR WITH FIXED DELA | LAPIS Semiconductor | 500 pcs |
|                                   | <a href="#">BU45K484G-TL</a> | VOLTAGE DETECTOR WITH FIXED DELA | LAPIS Semiconductor | 500 pcs |
|                                   | <a href="#">BU45K462G-TL</a> | VOLTAGE DETECTOR WITH FIXED DELA | LAPIS Semiconductor | 500 pcs |
|                                   | <a href="#">BU46K252G-TL</a> | VOLTAGE DETECTOR WITH FIXED DELA | LAPIS Semiconductor | 500 pcs |
|                                   | <a href="#">BU45K472G-TL</a> | VOLTAGE DETECTOR WITH FIXED DELA | LAPIS Semiconductor | 500 pcs |
|                                   | <a href="#">BU45L334G-TL</a> | VOLTAGE DETECTOR WITH FIXED DELA | LAPIS Semiconductor | 500 pcs |
|                                   | <a href="#">BU45L234G-TL</a> | VOLTAGE DETECTOR WITH FIXED DELA | LAPIS Semiconductor | 500 pcs |
|                                   | <a href="#">BU45L294G-TL</a> | VOLTAGE DETECTOR WITH FIXED DELA | LAPIS Semiconductor | 500 pcs |
|                                   | <a href="#">BU46K254G-TL</a> | VOLTAGE DETECTOR WITH FIXED DELA | LAPIS Semiconductor | 500 pcs |
|                                   | <a href="#">BU45K482G-TL</a> | VOLTAGE DETECTOR WITH FIXED DELA | LAPIS Semiconductor | 500 pcs |
|                                   | <a href="#">BU46K262G-TL</a> | IC DETECTOR VOLT 2.62V SSOP      | Rohm Semiconductor  | 500 pcs |
|                                   | <a href="#">BU46K234G-TL</a> | VOLTAGE DETECTOR WITH FIXED DELA | LAPIS Semiconductor | 500 pcs |
|                                   | <a href="#">BU45L292G-TL</a> | VOLTAGE DETECTOR WITH FIXED DELA | LAPIS Semiconductor | 500 pcs |
|                                   | <a href="#">BU45L472G-TL</a> | VOLTAGE DETECTOR WITH FIXED DELA | LAPIS Semiconductor | 500 pcs |
|                                   | <a href="#">BU46K264G-TL</a> | VOLTAGE DETECTOR WITH FIXED DELA | LAPIS Semiconductor | 500 pcs |
|                                   | <a href="#">BU46K232G-TL</a> | IC DETECTOR VOLT 2.32V SSOP      | Rohm Semiconductor  | 500 pcs |

|   |   |  |   |
|---|---|--|---|
| <a href="#">BU45L332G-TL-Lager</a>      | <a href="#">BU45L332G-TL Preis</a>                    | <a href="#">BU45L332G-TL-Elektronik</a>        | <a href="#">BU45L332G-TL-Komponenten</a>      |
| <a href="#">BU45L332G-TL Inventar</a>   | <a href="#">BU45L332G-TL Digikey</a>                  | <a href="#">Lieferant BU45L332G-TL</a>         | <a href="#">BU45L332G-TL online bestellen</a> |
| <a href="#">Anfrage BU45L332G-TL</a>    | <a href="#">BU45L332G-TL-Bild</a>                     | <a href="#">BU45L332G-TL Bild</a>              | <a href="#">BU45L332G-TL PDF</a>              |
| <a href="#">BU45L332G-TL Datenblatt</a> | <a href="#">BU45L332G-TL Datenblatt herunterladen</a> | <a href="#">Hersteller LAPIS Semiconductor</a> |   |