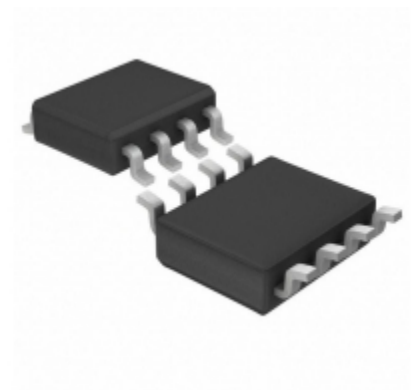


| | |
|--------------------------|--|
| LT4256-2CS8#TRPBF | |
| Teilenummer | LT4256-2CS8#TRPBF |
| Hersteller | ADI (Analog Devices, Inc.) |
| Beschreibung | IC CTRLR HOTSWAP HV AUTO 8SOIC |
| Verfügbare Menge | 2500 pcs in stock |
| Datenblätter | LT4256-2CS8#TRPBF.pdf |
| LT4256-2CS8#TRPBF Price | Preis und Lieferzeit online anfordern or Email us: Info@ariat-tech.com |


[EIN ANGEBOT BEKOMMEN](#)

| Technische Information von LT4256-2CS8#TRPBF | | | |
|--|---|---|--|
| Hersteller-Teilenummer | LT4256-2CS8#TRPBF | Kategorie | Integrierte Schaltungen (ICs) |
| Hersteller | ADI (Analog Devices, Inc.) | Beschreibung | IC CTRLR HOTSWAP HV AUTO 8SOIC |
| Paket / Fall | Tape & Reel (TR) | Verfügbare Menge | 2500 |
| Spannungsversorgung | 10.8 V ~ 80 V | Art | Hot Swap Controller |
| Supplier Device-Gehäuse | 8-SOIC | Serie | - |
| Programmierbare Funktionen | Current Limit, Fault Timeout, Slew Rate, UVLO | Verpackung | Tape & Reel (TR) |
| Verpackung / Gehäuse | 8-SOIC (0.154", 3.90mm Width) | Andere Namen | LT4256-2CS8#TRPBF-ND LT4256-2CS8#TRPBFTR |
| Betriebstemperatur | 0°C ~ 70°C | Anzahl der Kanäle | 1 |
| Befestigungsart | Surface Mount | Feuchtigkeitsempfindlichkeitsniveau (MSL) | 1 (Unlimited) |
| Hersteller Standard Vorlaufzeit | 12 Weeks | Bleifreier Status / RoHS-Status | Lead free / RoHS Compliant |
| Interne (r) | No | Eigenschaften | Auto Retry |
| Feature Pins | FB, PWRGD, TIMER, UV | detaillierte Beschreibung | Hot Swap Controller 1 Channel General Purpose 8-SOIC |
| Strom - Versorgung | 1.8mA | Strom - Ausgabe (max) | - |
| Basisteilenummer | LT4256 | Anwendungen | General Purpose |

LT4256-2CS8#TRPBF 2500 pcs Neu und original auf Lager, LT4256-2CS8#TRPBF-Bestand finden, Datenblatt, PDF, Inventar bei Ariat-Tech.com online, LT4256-2CS8#TRPBF mit Garantie und Vertrauen bestellen. Anfrage LT4256-2CS8#TRPBF: Info@Ariat-Tech.com

| Zugehörige Teile für LT4256-2CS8#TRPBF | | | | |
|--|------------------------------------|----------------------------------|----------------------------|----------|
| Bild | Teilenummer | Beschreibung | Hersteller | Menge |
| | LT4256-1IS8#TR | LT4256-1IS8#TR LINEAR | LINEAR | 2500 pcs |
| | LT4256-2IS8#PBF | IC CTRLR HOTSWAP HV AUTO 8SOIC | ADI (Analog Devices, Inc.) | 326 pcs |
| | LT4256-2CS8#PBF | IC CTRLR HOTSWAP HV AUTO 8SOIC | ADI (Analog Devices, Inc.) | 217 pcs |
| | LT4256-1IS8 | LT4256-1IS8 LINEAR | LINEAR | 200 pcs |
| | LT4256-1CS8#TRPBF | IC CTRLR HOTSWAP HV LATCH 8SOIC | ADI (Analog Devices, Inc.) | 1936 pcs |
| | LT4256-1IS8#TRPBF | IC CTRLR HOTSWAP HV LATCH 8SOIC | ADI (Analog Devices, Inc.) | 645 pcs |
| | LT4256-1CS8#PBF | IC CTRLR HOTSWAP HV LATCH 8SOIC | ADI (Analog Devices, Inc.) | 195 pcs |
| | LT4256-2IS8 | LT4256-2IS8 LINEAR | LINEAR | 39 pcs |
| | LT4256-1IS8#TRPBF. | LT4256-1IS8#TRPBF. LT | LT | 1143 pcs |
| | LT4256-1IS8#PBF | IC CTRLR HOTSWAP HV LATCH 8SOIC | ADI (Analog Devices, Inc.) | 8284 pcs |
| | LT42563 | LT42563 LT | LT | 6 pcs |
| | LT4256-3CGN | LT4256-3CGN LT | LT | 630 pcs |
| | LT4256-3CGN#TRPBF | IC CTRLR HOTSWP HV DETECT 16SSOP | ADI (Analog Devices, Inc.) | 1100 pcs |
| | LT4256-3IGN | LT4256-3IGN LT | LT | 69 pcs |
| | LT4256-3CGN#PBF | IC CTRLR HOTSWP HV DETECT 16SSOP | ADI (Analog Devices, Inc.) | 56 pcs |
| | LT4256-1CS8#TRPBF. | LT4256-1CS8#TRPBF. LT | LT | 752 pcs |
| | LT4256-2IS8#TRPBF | IC CTRLR HOTSWAP HV AUTO 8SOIC | ADI (Analog Devices, Inc.) | 96 pcs |
| | LT4256-2CS8 | LT4256-2CS8 LINEAR | LINEAR | 73 pcs |
| | LT4256-3IGN#PBF | IC CTRLR HOTSWP HV DETECT 16SSOP | ADI (Analog Devices, Inc.) | 300 pcs |
| | LT4256-3IGN#TRPBF | IC CTRLR HOTSWP HV DETECT 16SSOP | ADI (Analog Devices, Inc.) | 500 pcs |

| | | | |
|------------------------------|--|------------------------------|------------------------------------|
| LT4256-2CS8#TRPBF-Lager | LT4256-2CS8#TRPBF Preis | LT4256-2CS8#TRPBF-Elektronik | LT4256-2CS8#TRPBF-Komponenten |
| LT4256-2CS8#TRPBF Inventar | LT4256-2CS8#TRPBF Digikkey | Lieferant LT4256-2CS8#TRPBF | LT4256-2CS8#TRPBF online bestellen |
| Anfrage LT4256-2CS8#TRPBF | LT4256-2CS8#TRPBF-Bild | LT4256-2CS8#TRPBF Bild | LT4256-2CS8#TRPBF PDF |
| LT4256-2CS8#TRPBF Datenblatt | LT4256-2CS8#TRPBF Datenblatt herunterladen | Hersteller | |